



FOOD & AGRICULTURE IN THE CITY

Northeast Edmonton Planning Session
July 11th, 2007

Overview

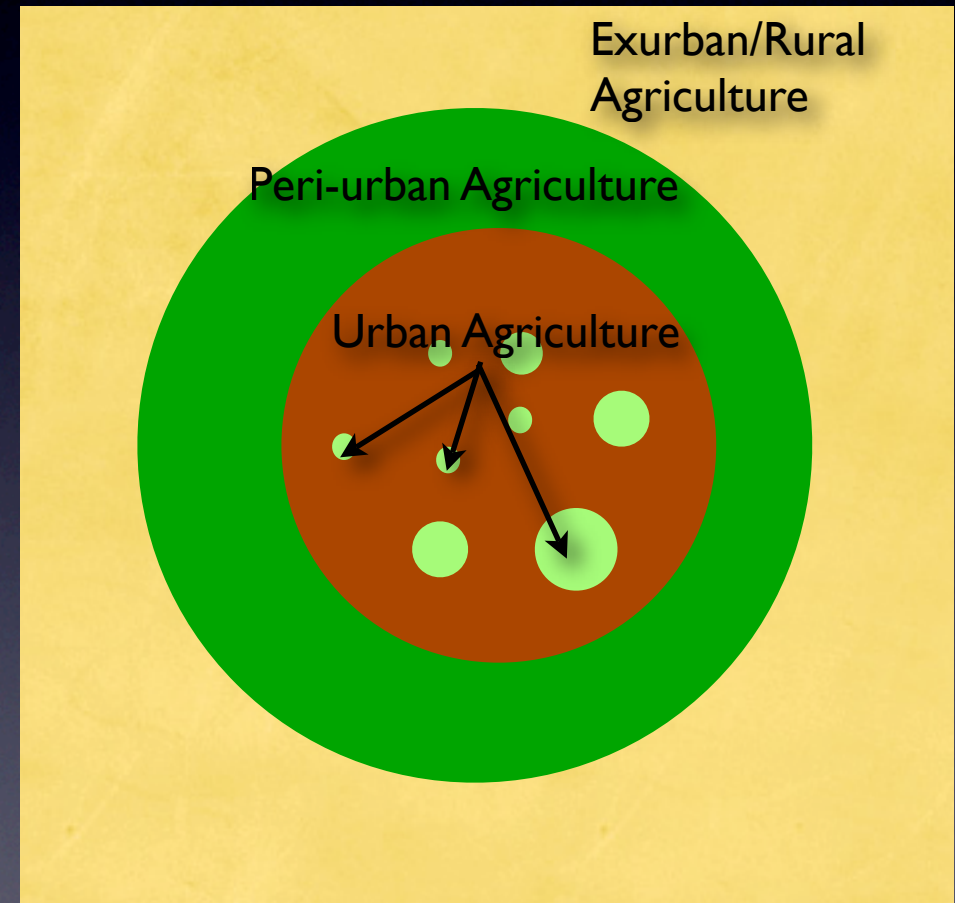
- Definitions
- Drivers
- Benefits
- Precedents
- Specific challenges & opportunities
- Ingredients for success



Urban Agriculture

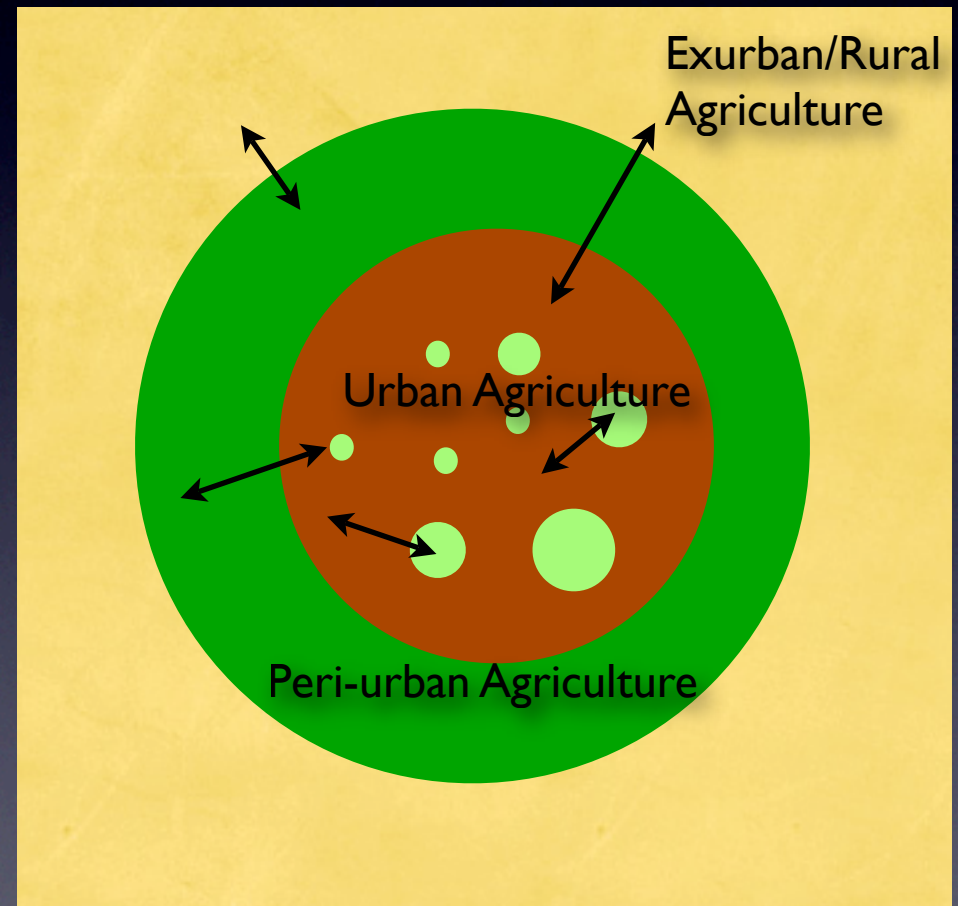
“Urban & peri-urban agriculture is the practice of agriculture (include crops, livestock, fisheries, forestry activities) within or surrounding the boundaries of cities.”

en.wikipedia.org



Civic Agriculture

- Locally-based agricultural and food production system
- Encompasses a broad range of activities
- Extends from the urban centre to the rural periphery
- Connected to local social & economic development
- Concerned with quality



Examples

- Farms
- Market Gardens
- School gardens
- Community/allotment gardens
- Backyard gardens
- Balcony & rooftop gardens

SCALE
↑



Also Includes...

Supporting Infrastructure:

- Community kitchens
- Markets
- Food distribution centres
- Food processing facilities
- Non profit/ government organizations
- Community networks



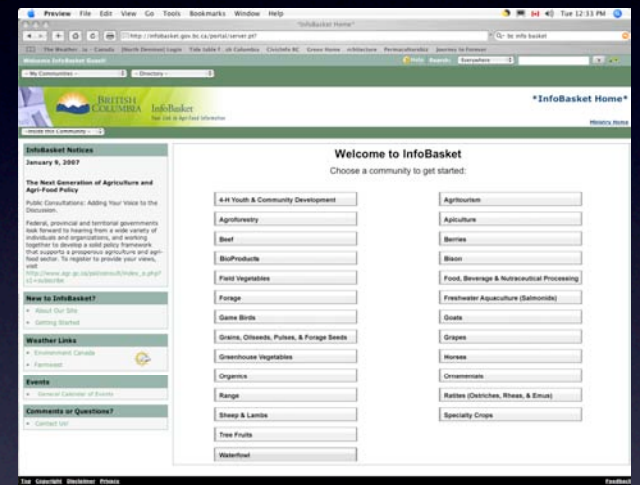
Challenges

- Increasing land prices & development pressures
- Perception
 - Not considered necessary
 - Not the highest & be\$\$t use of urban land
 - Creates problems
 - Considered a temporary use



Challenges

- Economic viability
- Declining government support
- Aging farm population
- Unsupportive/non-existent local policies



Farmland = private interest + public good

Drivers

Growing interest in:

- Quality i.e. taste



Drivers

Growing interest in:

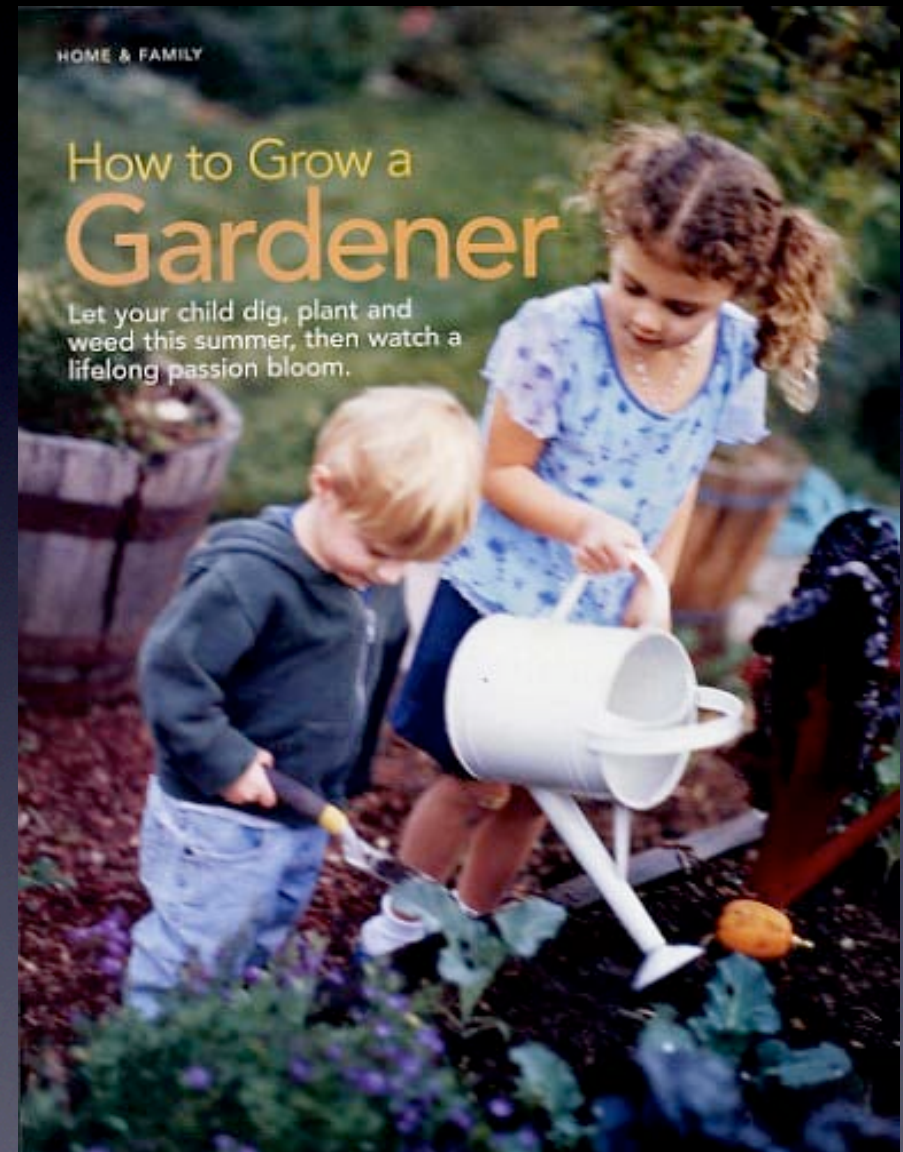
- Quality i.e. taste
- Health



Drivers

Growing interest in:

- Quality i.e. taste
- Health
- Gardening



Drivers

Growing interest in:

- Quality i.e. taste
- Health
- Gardening
- Farmland protection



Drivers

Growing interest in:

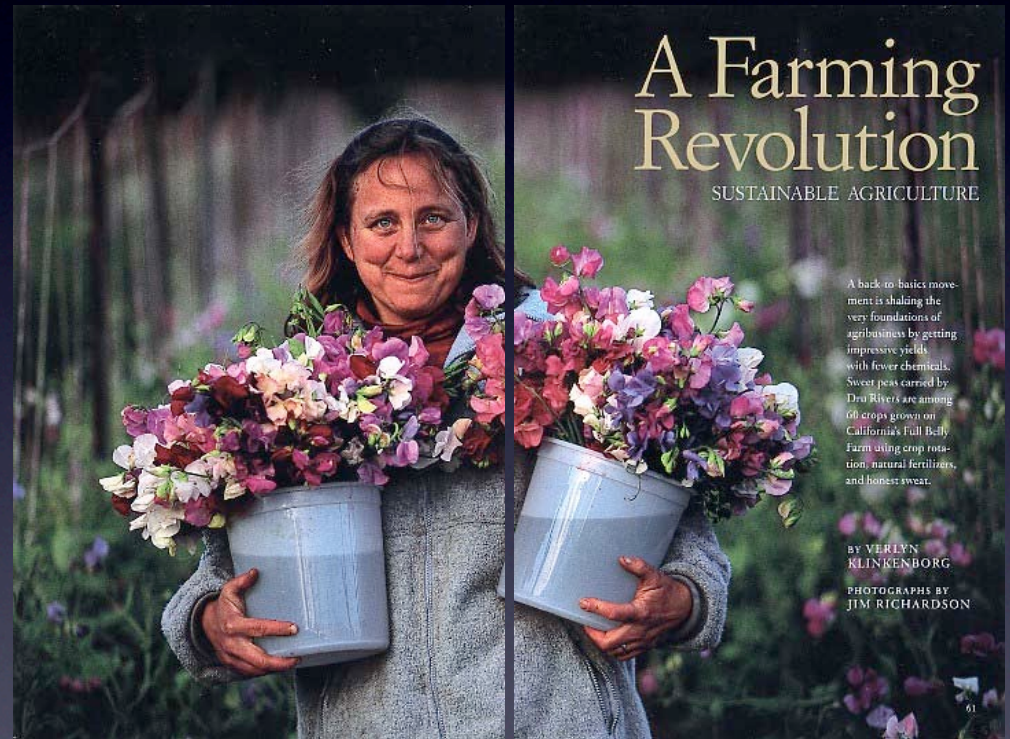
- Quality i.e. taste
- Health
- Gardening
- Farmland protection
- Food security



Drivers

Growing interest in:

- Quality i.e. taste
- Health
- Gardening
- Farmland protection
- Food security
- Sustainability & sustainable farming



Drivers

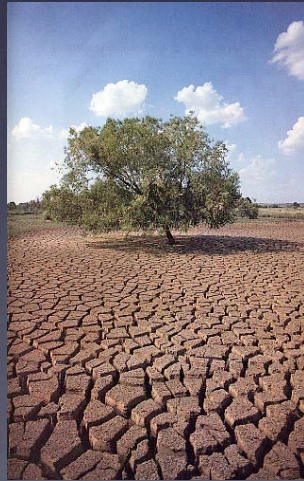
Growing interest in:

- Quality i.e. taste
- Health
- Gardening
- Farmland protection
- Food security
- Sustainability & sustainable farming
- Local community development



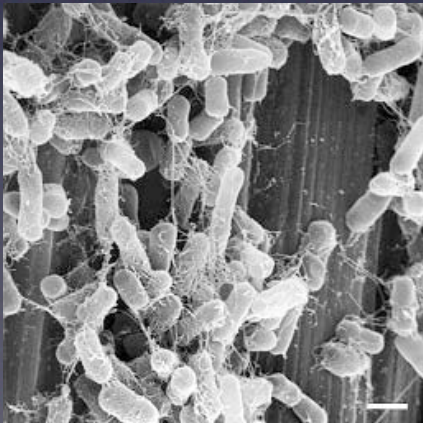
Other Drivers

Environment

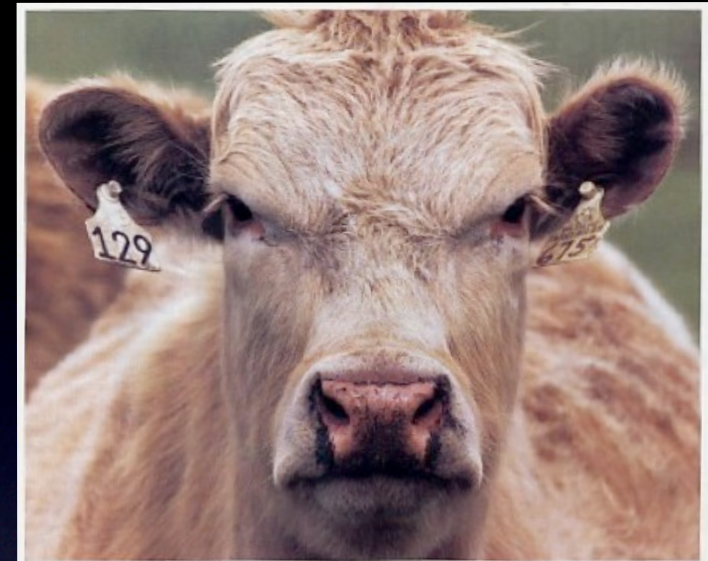


Other Drivers

Food Scares



E.Coli O157:H7



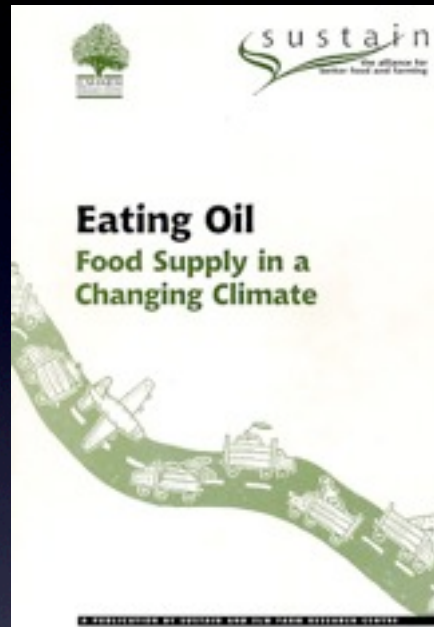
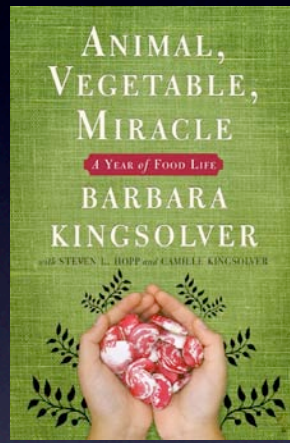
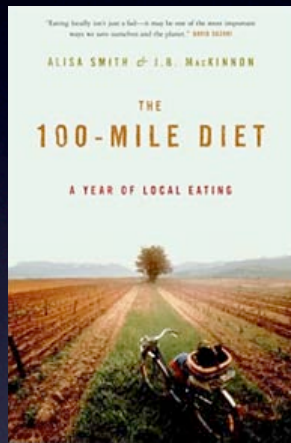
MAD COW FOOT-DRAGGING

Ottawa has yet to act on the recommended BSE reforms, writes JOHN GEDDES



Other Drivers

Growing Awareness



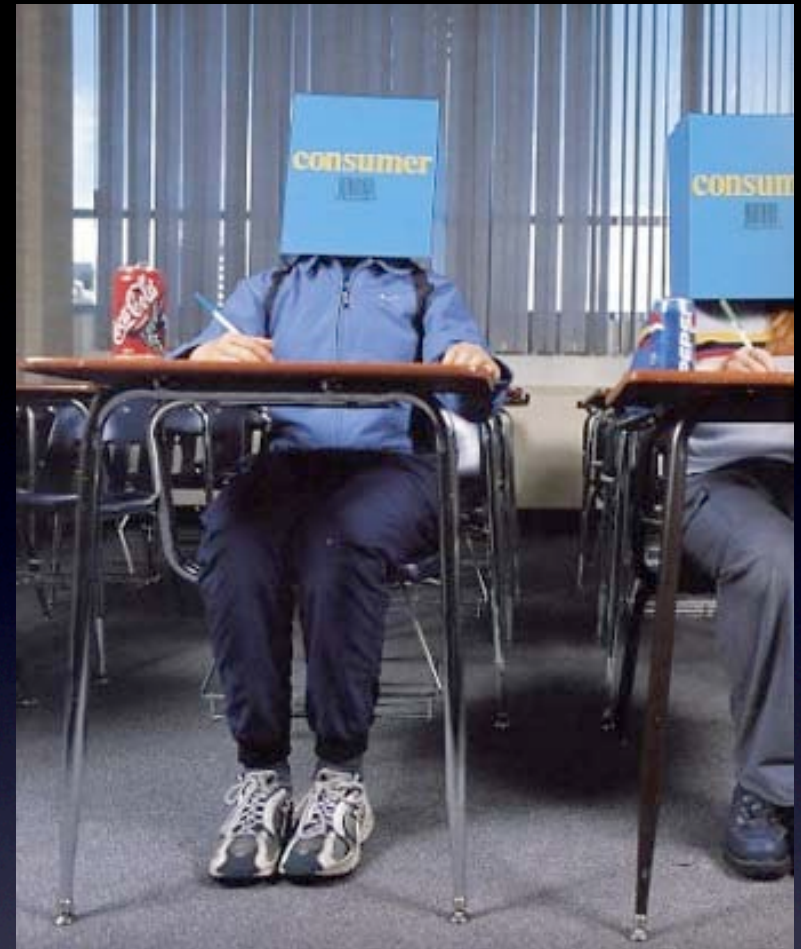
‘Eaters’ supporting farmers, saving farmland

Other Drivers

Increasing concern that we are becoming too disconnected from the natural world

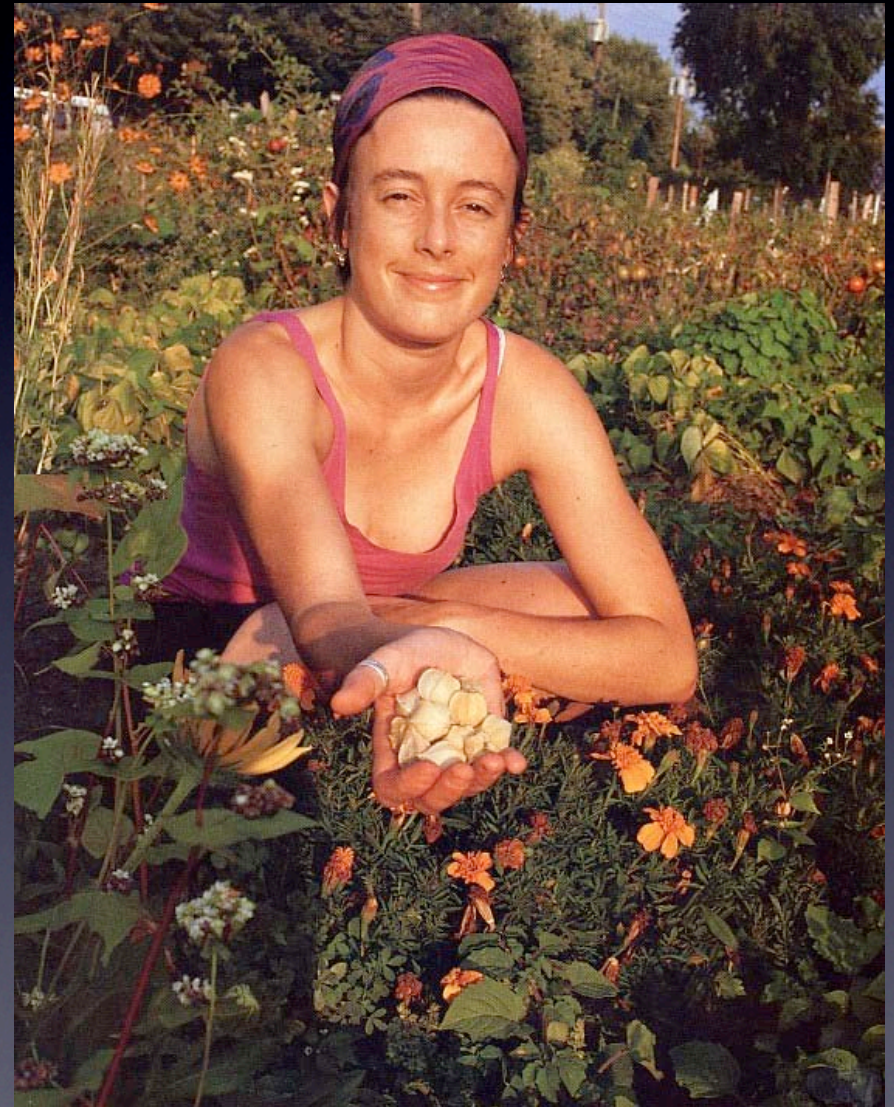
“...asphalt people who know little of nature & care less.”

Ian McHarg



Benefits of Civic Ag.

- Green infrastructure
- Food security
- Public amenity
- Economic diversity
- Education
- Re-connects people (land, food, community)
- Supports farmers & celebrates farming
- Important cultural activity



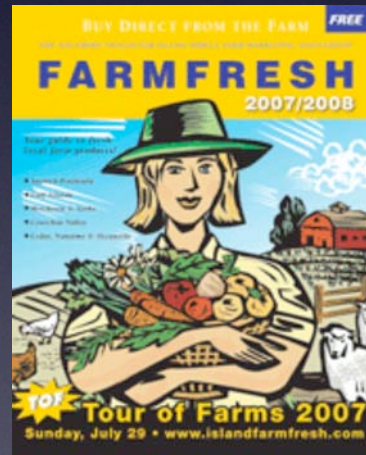
Involves...

- Land use planning/
community design
- Public policy development
- Extension services
- Nutrition & Health
- Environment
- Transportation



Involves...

- Education
- Economic development
- Marketing
- Community



Individual Buildings

- Built-in food/gardening infrastructure
- OR
- Designed to accommodate agricultural activities in the future (retrofitability)
- Difficult to encourage

Example:

Freesia, Vancouver, BC



www.freesialiving.com

Academic Institutions

- Educational emphasis - applied learning opportunities
- Focus on sustainability
“landscape shapes mindscape”
- Connects academic programs
- Waste = Food
- Desired by potential students

Example:

University of BC

Vancouver, BC

www.landfood.ubc.ca/ubcfarm



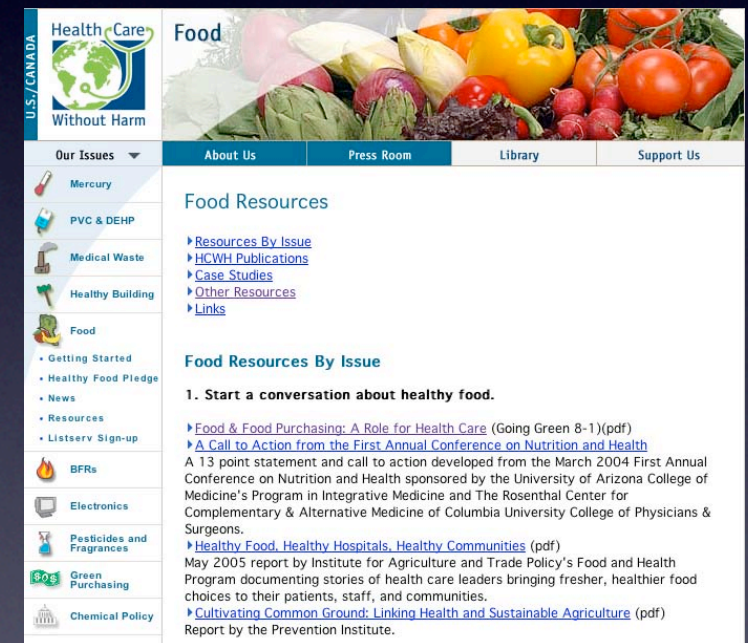
Hospitals

Health Care Without Harm (HCWH)

- Ecological sustainability
- Provides support - policies, suggestions, precedents
- Response to internal concerns

Encourage:

- Local/organic procurement policies
- Onsite farmers markets
- Removal of fast food outlets
- Composting



www.noharm.org

Prisons

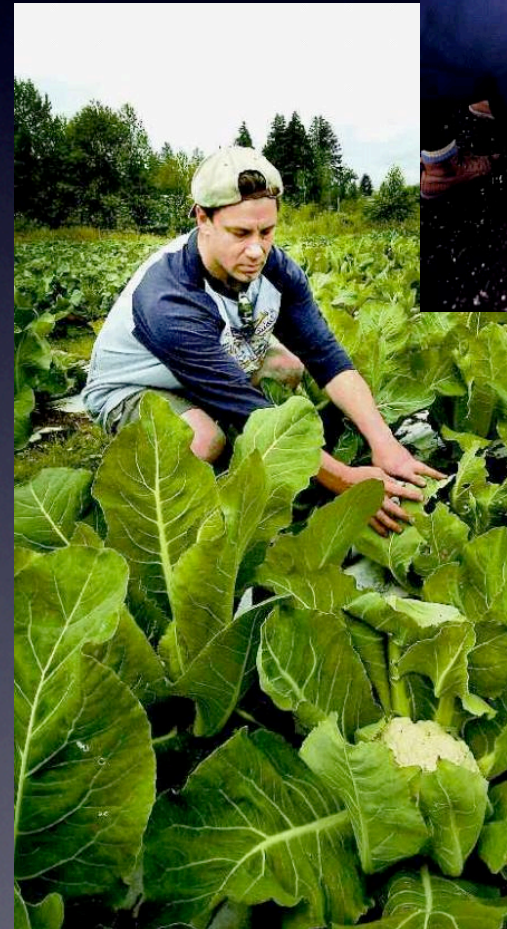
- Emphasis on rehabilitation
 - Builds skills
 - Therapeutic
 - Generates \$\$ or provides food to people in need
- Dependent on administration & facility type

Often involves:

- Horticulture program
- Food preparation

Example:

Ferndale Institution
Mission, BC



Agro-eco-industrial Parks

- “Waste = Food”
- Include greenhouses, waste treatment facilities & composting centres
- Often connect local agriculture & food operations

Example:

Intervale Center

Burlington, VE

www.intervale.org



Public Spaces

- Markets, community gardens, local education centres, agricultural parks
- Increasingly desired
- Numbers growing
- Not restricted to out-of-doors areas



Community Developments

- Built-in food/agricultural infrastructure
- Hi-tech & lo-tech approaches
- Highly desired but few examples
- Developers generally have to be “pushed” to include agriculture/gardening aspect



Village Homes, Davis CA



SE False Creek, Vancouver, BC

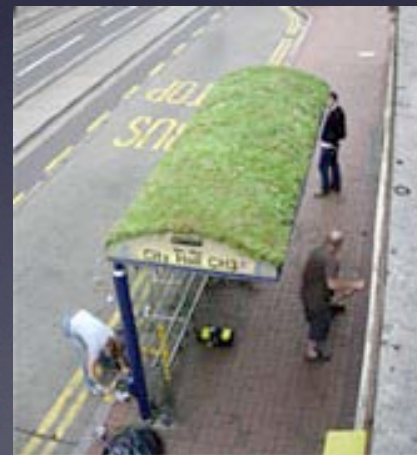
Transit-Oriented Development

- Provision of food/ag. infrastructure near transit centres
- Community gardens/kitchens, markets, food distribution centres
- Encourages transit use

Example:

Royal Oak Transit Park Proposal

Victoria, BC



Hamlets & Villages

- Nodal development pattern
- Sustainable rural development pattern
- Pattern maximizes farmland & open space
- Provides social & economic benefits

Examples

Europe

Eastern seaboard



Hamlets & Villages

- Nodal development pattern
- Sustainable rural development pattern
- Pattern maximizes farmland & open space
- Provides social & economic benefits

Examples

Europe

Eastern seaboard



Urban Containment

- Protection of high capability farmland through protective zoning
- Not perfect but has protected farmland in BC
- Requires a supportive public

Issue: no compensation provided

Example:

BC Agricultural Land Reserve

www.alc.gov.bc.ca



Farmland Protection



- Land trusts & covenants
- Lending/leasing land arrangements
- Farm/er cooperatives
- Non-profit support
- Transfer of development rights
- Developer involvement
- Considerate developments

Long-term access & protection

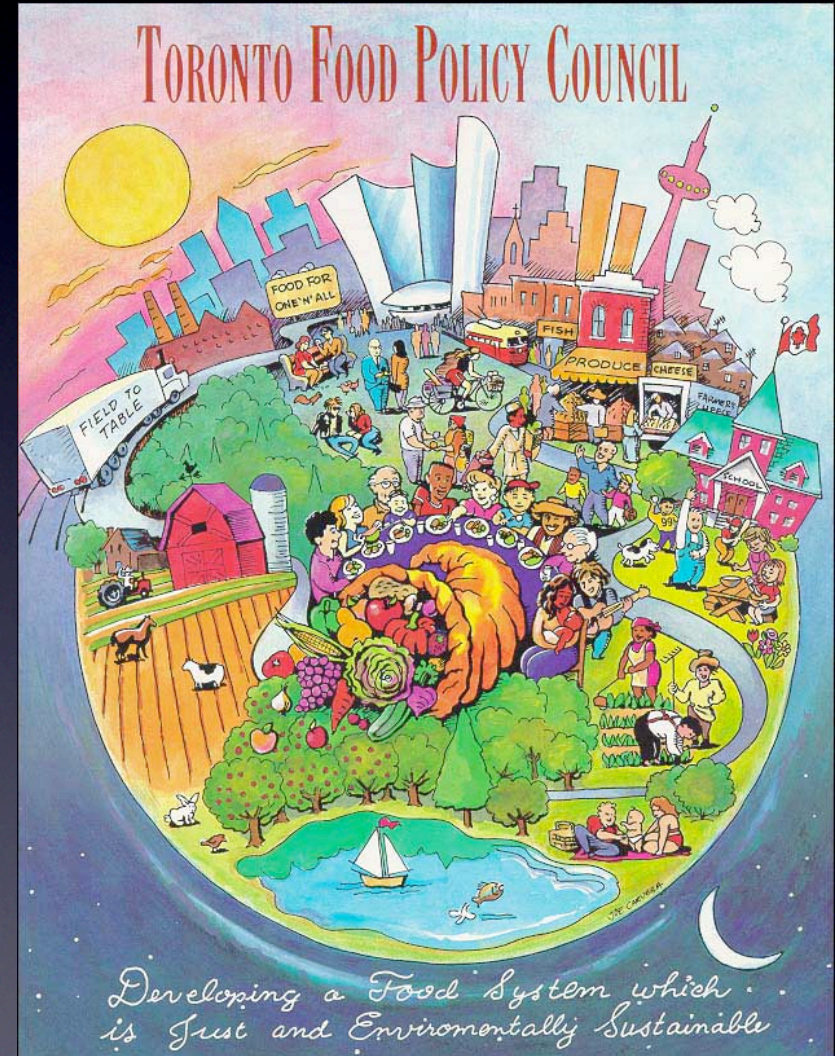


Food Policy Councils

- Provide support & direction to Council
- Bring together interest groups
- Can help develop supportive policies & research
- Requires good leadership

Examples

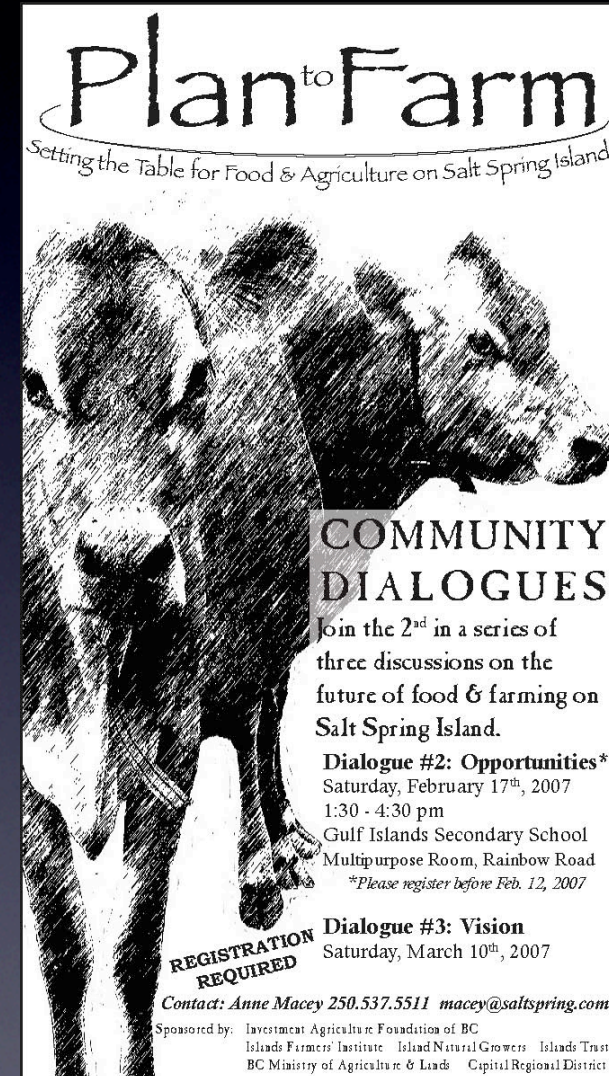
Vancouver, BC
Toronto, ON



Local Agricultural Planning

- Local planning initiatives
 - Agricultural area plans
 - Buffer zoning
 - Environmental Farm Planning
- Requires local & provincial government participating & support
- Reduces conflicts & addresses local needs

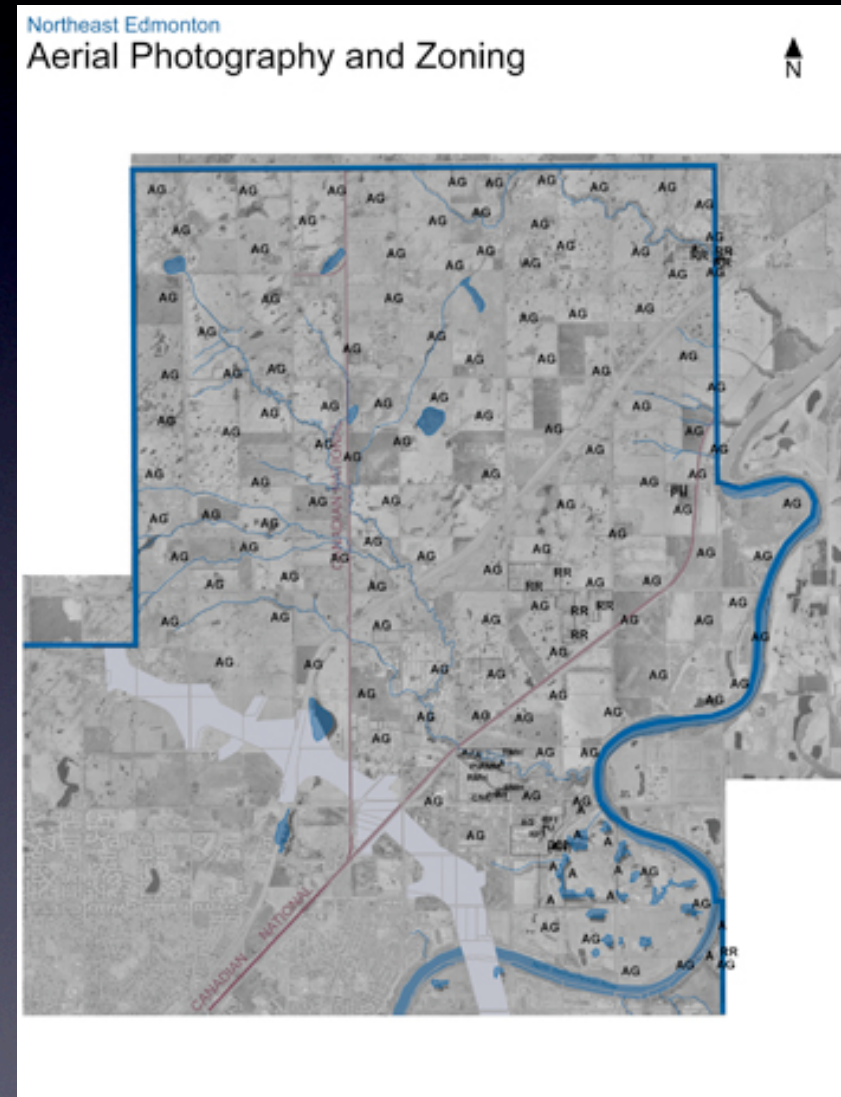
Examples: BC



www.agf.gov.bc.ca/resmgmt/sf/aap/index.htm

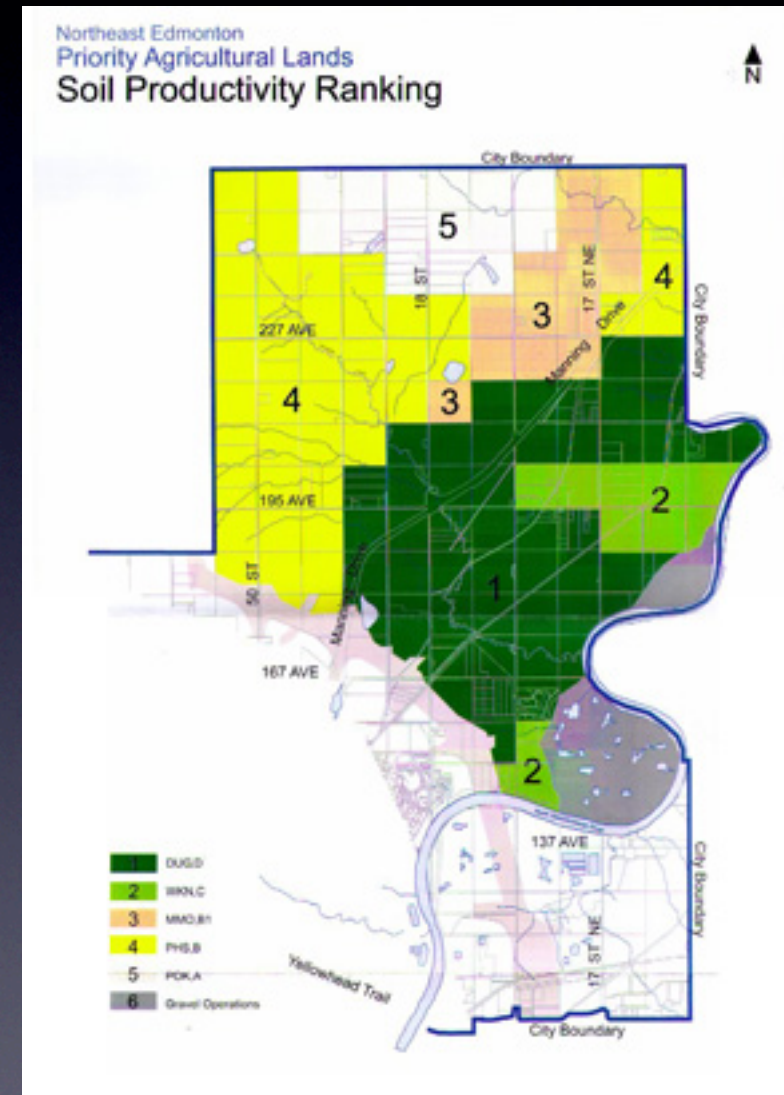
Specific Challenges

- Size of development area (10,000 ha)
- Development pressures
- Quality & extent of farmland (potential for long-term protection & integration)
- Addressing existing interests (compensation issues)
- Concentrating development
- Nature of future residents
- Community support & capacity



Specific Challenges

- Size of development area (10,000 ha)
- Development pressures
- Quality & extent of farmland (potential for long-term protection & integration)
- Addressing existing interests (compensation issues)
- Concentrating development
- Nature of future residents
- Community support & capacity



Specific Opportunities

- Will put Edmonton “on the map” - MODEL DEVELOPMENT
- Opportunity to generate new knowledge & models - INNOVATION
- Integration of future-oriented, green infrastructure - “DEEP” SUSTAINABILITY
- Develop & involve local leadership & knowledge - LEADERSHIP & CAPACITY
- Supports local cultural development initiatives - *2007 Cultural Capital of Canada*



Ingredients for Success

- Supportive public policy & planning instruments
- Political & administrative support
- Community involvement & participation
- Local champions
- Provision of economic incentives & supportive infrastructure
- Creativity



In Conclusion

“The city becomes a remembered city, a beloved city, not by its ability to manufacture or sell, but by its ability to create and hold bits of sheer beauty & loveliness...”

Harold Bartholomew, author of the 1928 Vancouver City plan

