

BC's Agricultural Land Reserve: *30 Years of Planning for Agriculture*



Issues & Opportunities

AFHVS/ASFS Conference, Victoria, BC
May 31st, 2007

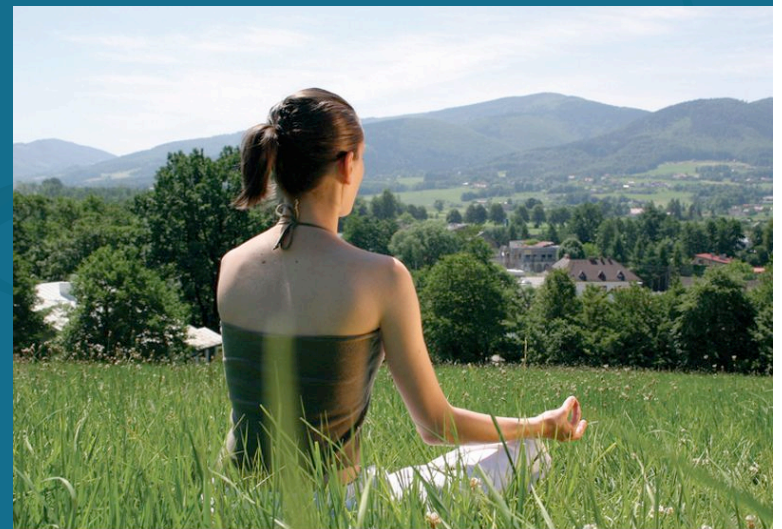
The Facts...

- 5% Amount of land in BC's ALR (4.7 million ha)
- 55% Amount currently farmed (2.6 million ha)
- ~20% Located on high quality soils
- ~50% Amount of ALR land located where 80% of BC's population lives
- ~50% Amount of food produced in BC to meet local needs
- 5-10% Amount produced on Vancouver Island to meet local needs
- \$60,000+ Cost of an acre of farmland on S. Vancouver Island
- 56 Average age of a BC farmer
- 2.2% Decline in the number of farms (between 2001 & 2006)



Challenges

- Increasing land prices



HEALTH AND LIFESTYLE ARE INTERTWINED ON SALT SPRING

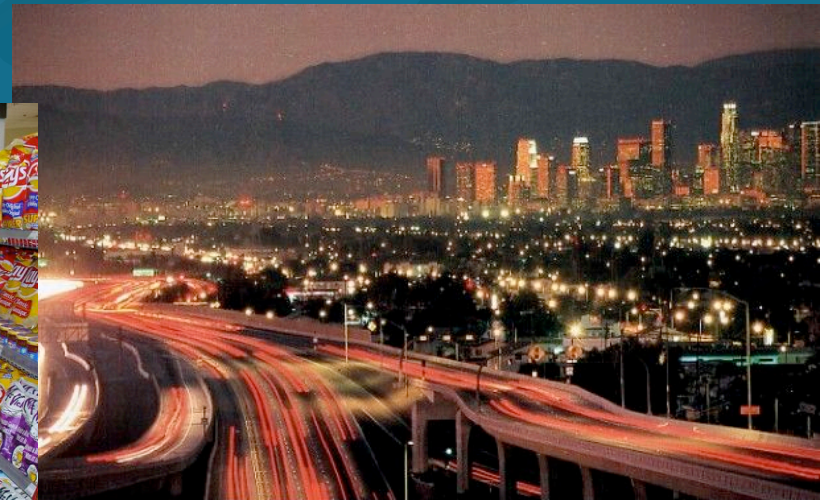
Challenges

- Increasing land prices
- Aging farm population



Challenges

- Increasing land prices
- Aging farm population
- Public Awareness



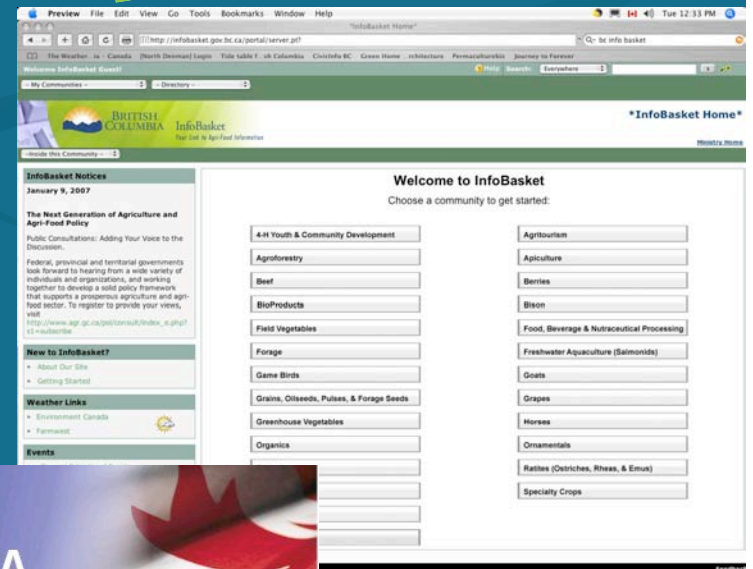
Challenges

- Increasing land prices
- Aging farm population
- Public Awareness
- Economic viability



Challenges

- Increasing land prices
- Aging farm population
- Public Awareness
- Economic viability
- Government support

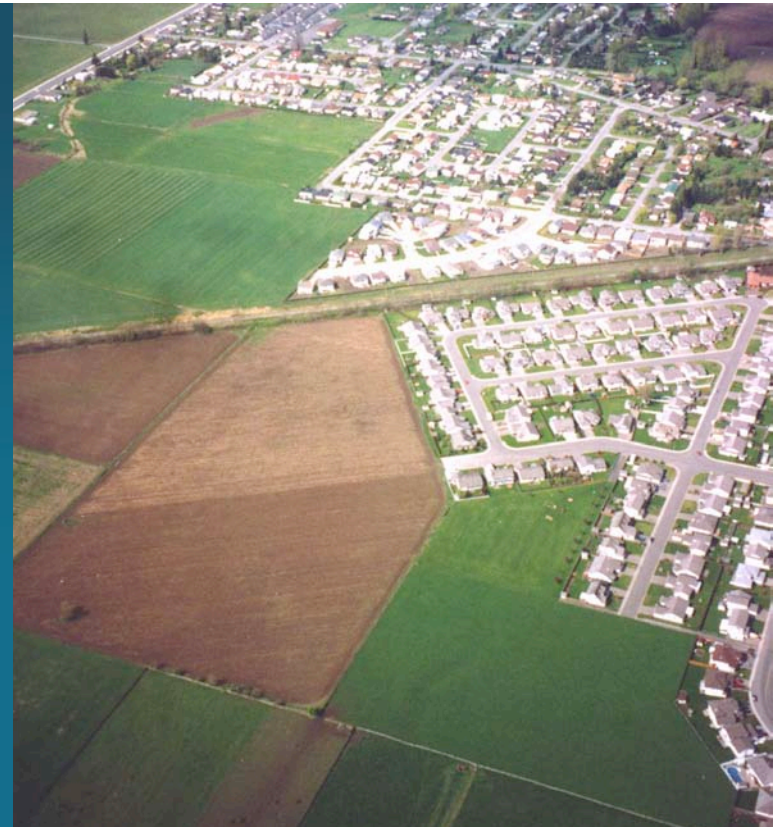


CFIA • ACIA

MASSELINK
ENVIRONMENTAL DESIGN

Challenges

- Increasing land prices
- Aging farm population
- Economic viability
- Government support
- Rural-urban conflicts



Local Approaches

Increasing Land Prices

- Land trusts & covenants
- Lending/leasing land
- Farm cooperatives



Long-term access & protection

Local Approaches

Aging Farm Population

- On-farm mentorships (S.O.I.L.)
- School gardens
- Post-secondary education programs & facilities



Growing new farmers

Local Approaches

Public Awareness

- Educational campaigns
- Public rallies



British Columbia's Greenbelt – the Agricultural Land Reserve (ALR) – is under attack. Are you worried about urban sprawl and the loss of agricultural land? Learn more, speak out, and act, to support the ALR.



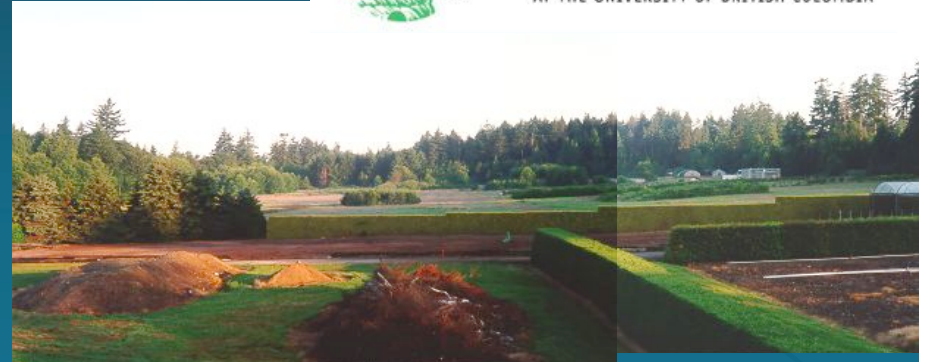
Save Formosa Nursery Organic Blueberry Farm



Local Approaches

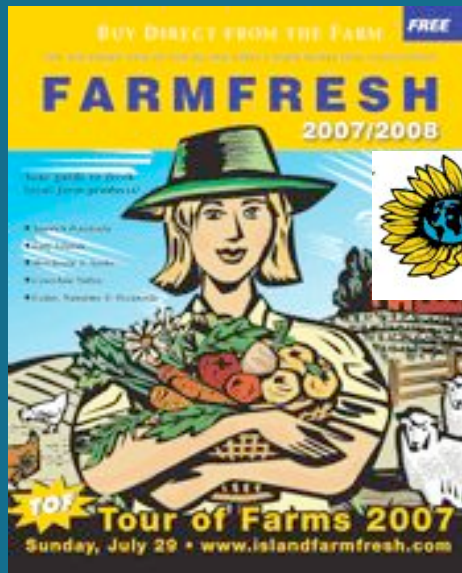
Public Awareness

- Demonstration projects
- Local farm & food directories



Haliburton

Community Organic Farm



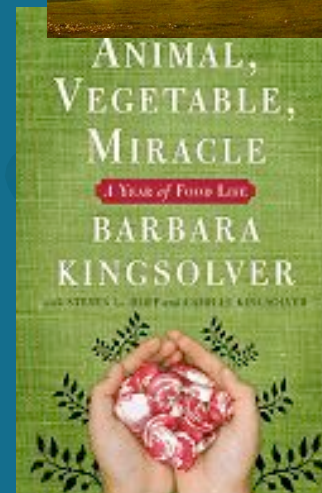
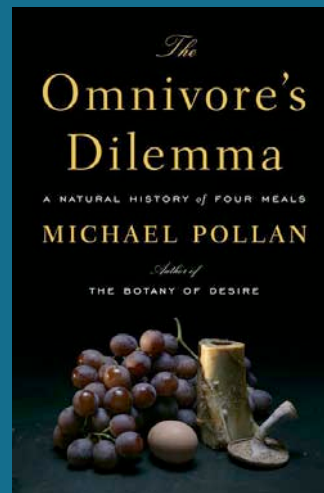
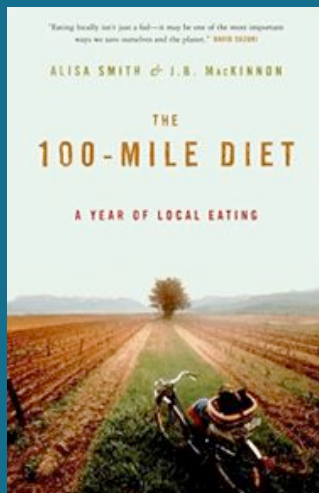
LifeCycles
cultivating communities



Local Approaches

Public Awareness

- Food/health focused events
- Media & stories



'Eaters' supporting farmers - saving farmland

Local Approaches

Economic Viability

- Neighbourhood pocket markets
- Entrepreneurial training



Local Approaches

Economic Viability

- Local farmer cooperatives
- Specialty products
- Labeling
- Partnering



*Innovation & creativity
Making farming pay*



Local Approaches

Government Support

- Extension services
- Regional or municipal agricultural planning
- Food policy development



Making Food Matter
Putting Food and Food Policy On the Table

- Site-specific projects



Community Organic Farm

Local government involvement

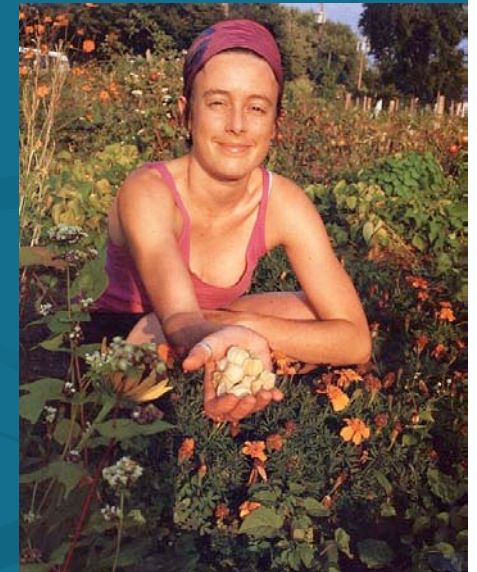
Local Approaches

Rural-Urban Conflicts

- Local planning initiatives
- Improved farm practices
- Urban/periurban agriculture

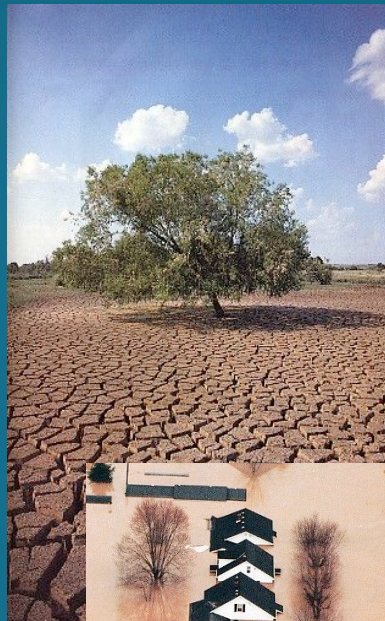


Respect & appreciation for farming
Consideration of neighbours

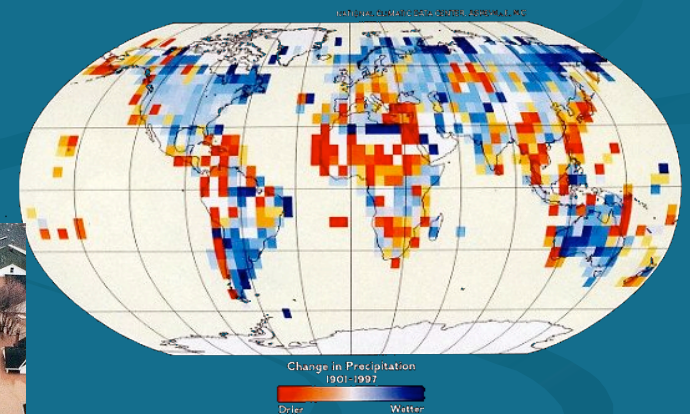
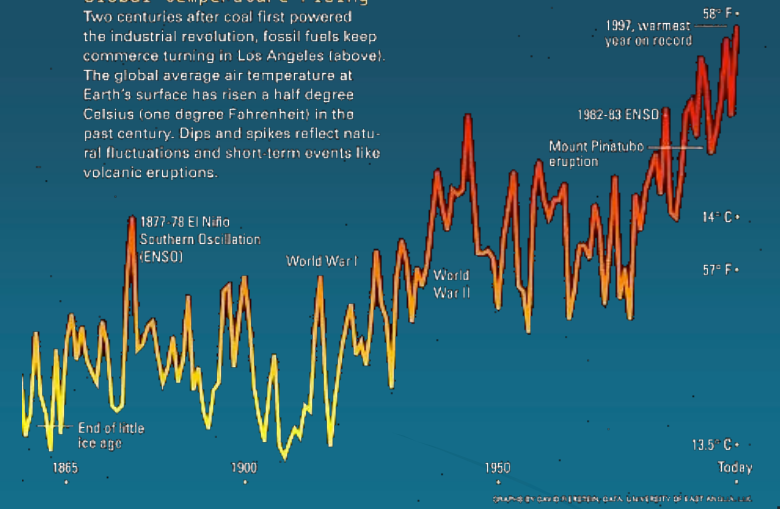


Future Challenges

- Environment

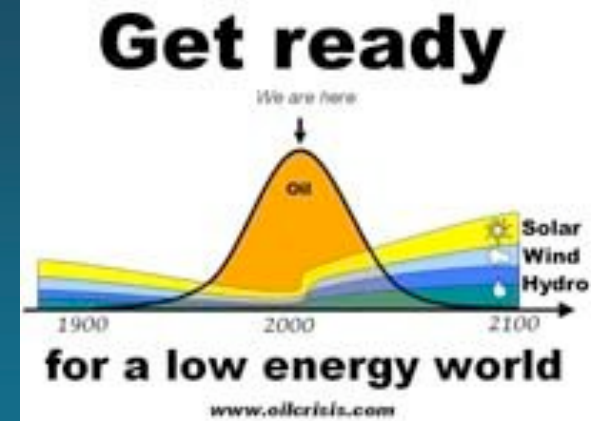


Global temperature rising
Two centuries after coal first powered the industrial revolution, fossil fuels keep commerce turning in Los Angeles (above). The global average air temperature at Earth's surface has risen a half degree Celsius (one degree Fahrenheit) in the past century. Dips and spikes reflect natural fluctuations and short term events like volcanic eruptions.

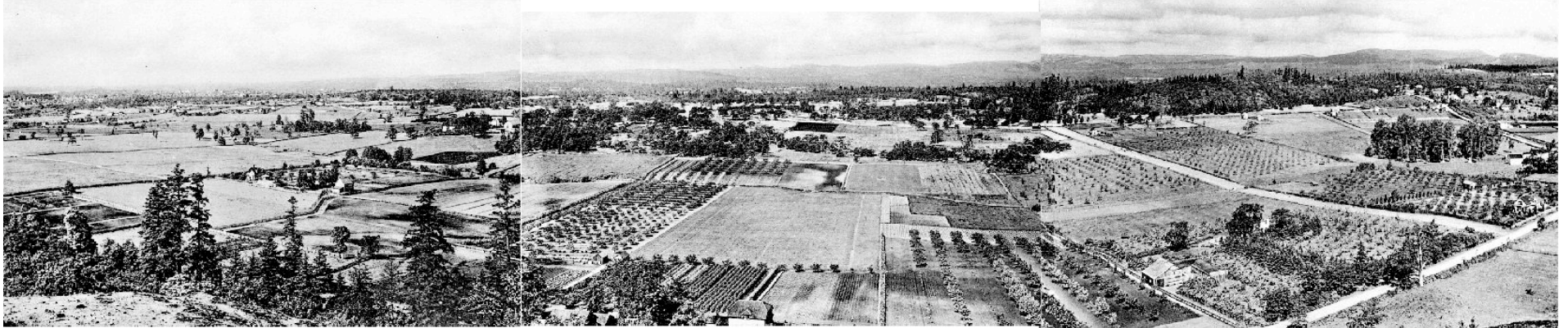


Future Challenges

- Environment
- Low energy future



Shelbourne Valley



1901



2007

"Stakes in the Ground"

"We must halt the slow, but steady erosion of our agriculture and food resources, and support our varied agricultural industries."

As a forward thinking society, we must dig in, take responsibility, and make sure that future generations have a vibrant agricultural land base."

- Moura Quayle 1998



Closing Thoughts

1988 BC Parks tabled “Striking the Balance” ~ 6% of BC protected

1993 BC initiated the Protected Areas Strategy

2007 BC has protected ~14% of its land for conservation purposes

In 1988 no one could have imagined this



Could we initiate something similar to protect farmland in perpetuity here in BC?

